

TO LET

0.56 acres (0.23 hectares)

- Located within minutes of J19 M6 Motorway
- Self-contained yard / car park



Open Storage Compound / Car Park

Cheshire Business Park
Lostock Triangle
Lostock Gralam
Northwich
CW9 7UA

dh DAVIES HARRISON
REAL ESTATE
0161 236 9999
www.daviesharrison.com

LOCATION

The site is located within Cheshire Business Park on the edge of Northwich Town Centre in Cheshire fronting Manchester Road (A556).

Access to the national motorway network is within 3 miles via Junction 9 of the M6 Motorway and the site is 5 minutes from Lostock Gralam Train Station.

Liverpool, Cheshire and Manchester are all within a 30 minute drive via the M56 and M60 Motorways. Manchester International Airport is only a 15 minute drive away.

Adjacent occupiers include Celandine Court, Lostock Lodge, Costa Coffee Drive-Thru, Subway, Bernardo's, Co-op, Weaver's Whistle and Travelodge.

DESCRIPTION

Comprising a tarmac level site it could be suitable for the following uses:

- Open / external storage
- Ideal for Lorry park
- Plant and machinery / container storage
- Car parking
- Secure compound

ACCOMMODATION

The site comprises 0.56 acres (0.23 hectares).

RATEABLE VALUE

The tenant may be required to pay business rates depending on the end use of the site.

Interested parties should make their own enquiries with the Local Rating Department.

PLANNING

The site is located within an established Business Park.

Interested parties should make their own enquiries of the Cheshire West & Chester Council Planning Department.

TERMS

The site is available by way of a new full repairing and insuring lease for a term to be agreed.

RENTAL

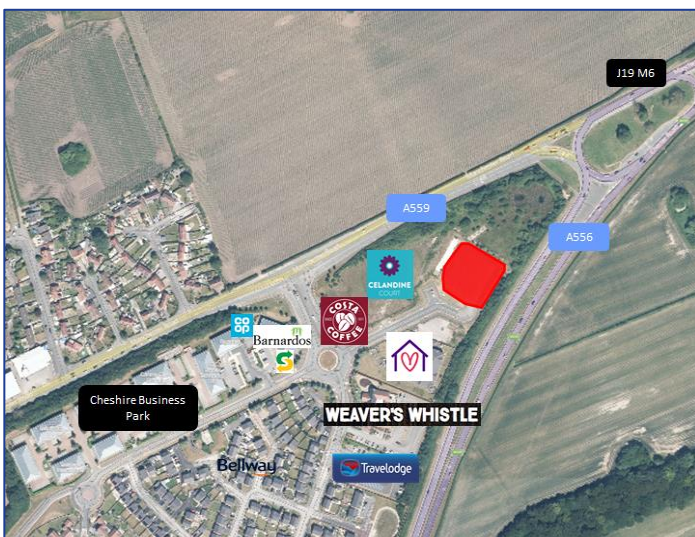
Upon application.

VAT

All prices are exclusive but may be liable to VAT at the prevailing rate.

LEGAL COSTS

Each party is to be responsible for their own legal costs incurred in this transaction.



FOR FURTHER INFORMATION OR TO ARRANGE A VIEWING PLEASE CONTACT

RICK DAVIES
07831 658804

rick@daviesharrison.com

SAM RODGERS
07903 518044

sam@daviesharrison.com

